

wedventure™

MAGAZINE

SHARING REAL & STYLED PNW
WEDDINGS & ELOPEMENTS
TO INSPIRE YOUR OWN

Wedding Adventures



\$9.99 FALL 2018

8 2 >



SAYING I DO IN THE PACIFIC NORTHWEST



Let the ocean
HEAR YOU SAY I DO.

MAKE YOUR WEDDING AN ADVENTURE IN PACIFIC CITY.

PELICAN BREWING COMPANY

Weddings and receptions in the sand, our barrel room, or ocean view banquet room. With reception and banquet seating up to 90 guests.

PelicanBrewing.com
503.965.3674



HEADLANDS COASTAL LODGE & SPA

Oceanfront lodging for your guests. 33 guest rooms and 18 cottages. Catering by Meridian Restaurant & Bar and relaxation by Tidepools Spa & Wellness.

HeadlandsLodge.com
503.483.3000



INN AT CAPE KIWANDA

35 newly refurbished ocean view guest rooms and suites. Ideal for families and steps to the beach. Delicious baked goods by Stimulus Coffee + Bakery.

InnatCapeKiwanda.com
888.965.7001



HART'S CAMP

Offbeat luxury Airstream Hotel with fenced private yards, barbeques, firepits and stargazing above. RV parking available. On-premise Camp store for last-minute entertainment.

HartsCamp.com
503.965.7006



SHOREPINE VACATION RENTALS

Entire homes available for rent—from single bedrooms to luxury homes sleeping 10 or more. Take your pick of beach front or sweeping panoramic views.

ShorepineRentals.com
503.965.5776





#ADVENTUREELOPEMENT PART TWO:

Elope WITH US

WRITTEN BY NINA LARY

LOCATION: OCEANSIDE, OREGON; PHOTOGRAPHY: ALIXANN
LOOSLE; DRESS: VINTAGE OFF EBAY; HAIR + MAKEUP:
CASSANDRA KENNEDY; FLORALS: METAL AND MOSS

"This day was all about them in the simplest of ways. I felt inspired by this day because it was so laid back. No crazy timeline, no long list of vendors, and no fancy venue was used. To the couples who are spontaneous and want a wedding that's all about them — this is the way to go." -Lauren Nicole Photography

LOCATION: CAPE KIWANDA IN PACIFIC CITY, OREGON;
PHOTOGRAPHY: LAUREN NICOLE; FLORALS: GOOD SEED
FLORAL DESIGN; DRESS: RUE DE SEINE; HAIRPIECE:
OWISTERIA; JEWELRY: PIPPA JAYNE DESIGNS





Cape Kiwanda:

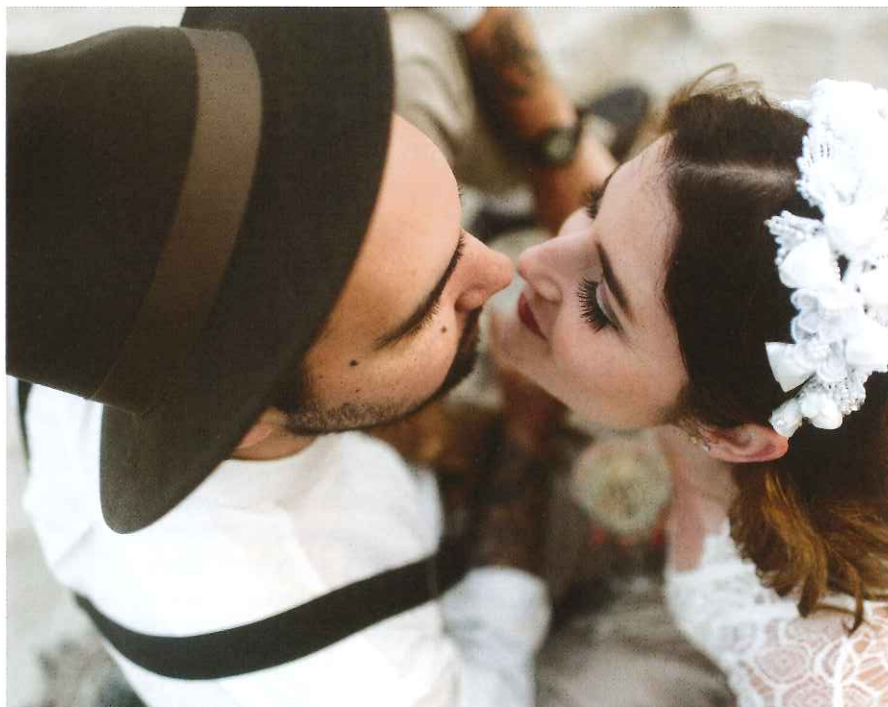
• Described best by The Foxes Photography, "Cape Kiwanda is a photographer's paradise, with waves crashing dramatically into rugged sea cliffs that jut out into the Pacific Ocean. Then there's the massive Haystack Rock that lurks just off the coast, adding a whole 'nuther level of epicness to the scene. It doesn't get much more epic than this."

• The haystack at Cape Kiwanda is the tallest on the whole Oregon Coast rising 327 feet above the sea and the fourth tallest sea stack in the world. Note: This haystack is not to be confused with Haystack Rock in Cannon Beach.

WV TIP: Headlands Coastal Lodge & Spa in Pacific City, Oregon, will accommodate you and your guests with everything from assisting the planning of your daily adventures, to helping you to replenish and recharge at their day spa and/or to dining at their fantastic restaurant. Learn more on page 1 (inside front cover) of this issue, or visit them at headlandslodge.com.

WV TIP: Brewery Alert: You can also stop by Pelican Brewing and enjoy some award-winning suds right on the beach — it's seriously one of the best locations of any brewery in our opinion. Along with their amazing food, Pelican's goal is to help you make some new fave memories while dining with them. Cheers!

LOCATION: CAPE KIWANDA IN PACIFIC CITY, OREGON;
PHOTOGRAPHY: BRIANNA BENDER; FLORALS: HEATHER NABB



THIS PAGE, TOP: LOCATION: SAMUEL H. BOARDMAN STATE SCENIC CORRIDOR; PHOTOGRAPHY: THE FOXES PHOTOGRAPHY; DRESS: LILIAN WEST

THIS PAGE BOTTOM & OPPOSITE PAGE: LOCATION: CAPE KIWANDA IN PACIFIC CITY, OREGON; PHOTOGRAPHY: LEVI HRICZO; DRESS: TRUVELLE; MODELS: HAKEEM SALAMI + JASMINE HENDERSON; TAKEN AT THE LET'S GO WORKSHOP BY GRACE AND JADEN



Samuel H. Boardman State Scenic Corridor & Park:

- Craggy bluffs, secluded beaches, and offshore rock formations await along the 12 ocean-hugging miles of this park located between Brookings and Gold Beach along Highway 101.
- Samuel H. Boardman State Scenic Corridor is one of Oregon's best-kept secrets. Maybe not so on Instagram (LOL), but because it's located on the southwest corner of Oregon, even the well-intentioned rarely make it there. However, we highly recommend the area and hope to see more images from it!

WV TIP: China Beach is one of the least visited beaches in the area and so a great option for an intimate elopement. You are practically guaranteed privacy along with the beautiful view. Numerous sea stacks just offshore make for interesting scenery along the towering cliffs. Afternoon sun reflections and frequent fog can often inhibit viewing, but both can make for the most gorgeous of photos with the right photographer.



